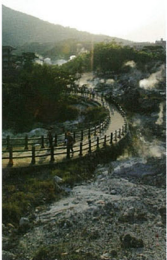




Nagasaki Atomic Bomb Museum



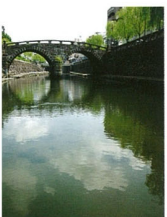
Nagasaki Shipyard
Photo by courtesy of Mitsubishi Heavy Industries, Ltd. Nagasaki Shipyard.



Unzen Geopark



Unzen Volcano (front right: Mt. Mayu, back left: Heisei-shinzan)



Maganishi-bashi (Spectacles Bridge)



Nagasaki Peace Park

Message



Come and learn about environmental policy and technology in Japan

Dean, Prof. Masaki NAGAE

Faculty of Environmental Science was established in 1997 to solve emerging global and regional environmental problems. Our education and research aim is to train prospective students as environmental professionals in a transdisciplinary environment to serve for the benefit of the global society. We welcome all of you to Nagasaki University to share this excellent opportunity during this summer.

2024 participants' feedback

My impressions of the Summer School Program 2024.

Film from Mahidol University, Thailand

Beyond academic growth, the program enriched my life with new experiences. Immersing myself in a different educational setting, collaborating with peers from around the world, and embracing a new cultural context contributed to my personal development. Overall, the Summer School Program has been a transformative experience, blending educational advancement with invaluable life lessons. It has broadened my horizons and provided me with memories and skills that will benefit me well into the future. Thank you very much for everything.

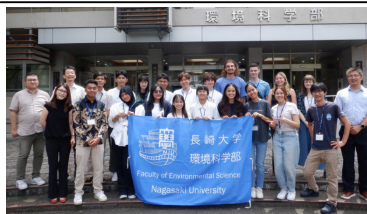
It was a great experience.

Niall from Lancaster University, United Kingdom

I really enjoyed my time on the Nagasaki Summer School, it was a great experience, and I wish it could have lasted longer. The research was interesting and the many fieldtrips I went on were fascinating. It was great being able to explore the Nagasaki prefecture, experiencing local culture and growing to understand how these landscapes have been shaped by people and geography alike. Whilst the exploration was fun, being able to make new connections is what made this internship truly memorable. I enjoyed making new friends with from parts of the world I've never seen, hearing stories from their home countries, and comparing our different cultures.



Memorial photos



Participants of the Transdisciplinary Summer School on the Environment (AERRC 2024)

How to apply

Please contact International Exchange Office of your university. Students from universities holding MOU with Nagasaki University are waived from tuition and fees. Participants are responsible for their cost of travel and accommodation. Limited scholarships are available.

Enquiries

International Exchange Committee,
Faculty of Environmental Science,
Nagasaki University
1-14 Bunkyo-machi, Nagasaki-shi,
Nagasaki 852-8521, Japan
Phone: +81-(0)95-819-2715
E-mail: env_international@ml.nagasaki-u.ac.jp
URL: <http://www.env.nagasaki-u.ac.jp/english/>



Access to Nagasaki University



From Fukuoka International Airport
2 hours by highway express bus to Nagasaki

From Nagasaki Airport
50 minutes by limousine bus via Showa-machi

From JR Nagasaki Station
20 minutes by tram #1, 2 & 3 towards Akasako



Faculty of Environmental Science, Nagasaki University
1-14 Bunkyo-machi, Nagasaki-shi, Nagasaki 852-8521, Japan
Tel. +81-(0)95-819-2715 Fax. +81-(0)95-819-2716



HYFLEX INTERNATIONAL EXCHANGE PROGRAM Transdisciplinary Summer School on the Environment Faculty of Environmental Science, Nagasaki University "Asian Environmental Resilience Research Initiative 2025" Asian Environmental Resilience Research Center (AERRC)



About Summer School

Transdisciplinary Summer School on the Environment provides unique opportunities for undergraduate and master course students who wish to acquire knowledge and skills on environmental management and science for environmental conservation. The HyFlex Summer School consists of International Environmental Expert Seminar, Problem-Based Learning, and Internship at the Faculty of Environmental Science, Nagasaki University, Japan or via online linking with your own home and partner universities.

International Environmental Expert Seminar (IEES) & Problem-Based Learning (PBL) on the environment July 7– August 29, 2025

International Environmental Expert Seminar (IEES) provides multidisciplinary lectures with topics ranging from Japanese environmental management policies to the science and technology for the environmental issues. Problem-Based Learning (PBL) includes group discussions, local field trips, and group presentations on environmental problems of students' home countries. Students will receive 2 credits on the completion on the IEES and PBL.

Laboratory Internship & Young Researcher Training by Asian Environmental Resilience Research Center (AERRC) July 23– August 18, 2025

Laboratory internship opportunities are hosted by our faculty members with expertise ranging from social science to natural science. Laboratory work includes analytical/green chemistry, toxicology, solid waste management, physiology, bioengineering, geology, phycology, conservation ecology, environmental law, economics, sociology, international relations, management and planning. Please visit our website (<http://www.env.nagasaki-u.ac.jp/english/members.html>) for available options. AERRC provides training program for young researchers to promote transdisciplinary environmental research for SDGs.

July	7 Mon	8 Tue	9 Wed	10 Thu	11 Fri	12 Sat
1st week (Online)	Orientation Opening remarks	First half of IEES (on-demand classes of four key topics in environmental science)				
		Introduction to Carbon Emissions Trading (Dr. Teng MA) & Challenges for sustainable forest management (Dr. Masahiko OTA)				
		Microbial engineering and bioinformatics (Dr. Mitsuhiko KOYAMA) & Eel Science for Conservation and Sustainable Fishery (Dr. Kazuki MATSUSHIGE)				
July	14 Mon	15 Tue	16 Wed	17 Thu	18 Fri	19 Sat
2nd week (Online)	First half of IEES (continued)					
July	21 Mon	22 Tue	23 Wed	24 Thu	25 Fri	26 Sat
3rd week (HyFlex)	Japanese Holiday: Marine day	Arrival at Nagasaki	Laboratory Internship & Young Researcher Training (1st round: 8 days)			
July	28 Mon	29 Tue	30 Wed	31 Thu	1 Fri	2 Sat
4th week (HyFlex)	PBL progress check (online)			Laboratory Internship & Young Researcher Training (2nd round: 8 days)		
August	4 Mon	5 Tue	6 Wed	7 Thu	8 Fri	9 Sat
5th week (HyFlex)	PBL progress check (online)				PBL Group Meeting & Nagasaki History and Cultural Exchange	Nagasaki Memorial Day (Peace day)
August	11 Mon	12 Tue	13 Wed	14 Thu	15 Fri	16 Sat
6th week (HyFlex)	Self study Japanese Holiday: Mountain day (observed)	Self study (NU's Summer Closure)	Self study (NU's Summer Closure)	Self study (NU's Summer Closure)	Preparing PBL presentation & abstract	
August	18 Mon	19 Tue	20 Wed	21 Thu	22 Fri	23 Sat
7th week (HyFlex)	Internship presentation & PBL progress check			Second half of IEES (face-to-face classes)		Shimabara Peninsula (Dr. Kodo UMAKOSHI & Dr. Takashi WATANABE)
				(Dr. T. MA & Dr. M. OTA)		
				(Dr. M. KOYAMA & Dr. K. MATSUSHIGE)		
August	25 Mon	26 Tue	27 Wed	28 Thu	29 Fri	30 Sat
8th week (HyFlex)	Nagasaki Peace Study	PBL progress check	Submit PBL abstract	PBL presentation & Discussion	Closing remarks	Preparing return trip


Program may be changed due to COVID-19 pandemic.

Environmental Policy

Science & Technology

PBL & Training

IEES Lecturers in AERRI 2025




長崎大学
NAGASAKI UNIVERSITY
2025

Transdisciplinary Summer School on the Environment (Asian Environmental Resilience Research Initiative 2025)


International Environmental Expert Seminar

Assoc. Prof. Dr. Teng MA
Environment Economics Laboratory,
Department of Environmental Science,
Institute of Integrated Science and Technology,
Nagasaki University




“Introduction to Carbon Emissions Trading”
Market-based instruments for the environment: the emissions trading scheme.
In this lecture, the basic concepts, mechanisms, and current status of the carbon emissions trading scheme will be discussed.

Assoc. Prof. Dr. Mitsuhiro KOYAMA
Laboratory of Resource Circulation Bioengineering,
Department of Environmental Science,
Institute of Integrated Science and Technology,
Nagasaki University




“Microbial engineering and bioinformatics”
Environmental biotechnology uses microorganisms to convert waste biomass and wastewater into valuable resources. This lecture explores microbial engineering and bioinformatics approaches for optimizing bioprocesses.

Assoc. Prof. Dr. Masahiko OTA
Natural Resource Management Laboratory,
Department of Environmental Science,
Institute of Integrated Science and Technology,
Nagasaki University



“Challenges for sustainable forest management”
Managing forests sustainably requires a deeper understanding of institutional, economic, and social aspects. This lecture will elucidate the current status and challenges of forest management, with a particular focus on tropical Asia and Japan.

Asst. Prof. Dr. Kazuki MATSUSHIGE
Aquatic Conservation Laboratory,
Department of Environmental Science,
Institute of Integrated Science and Technology,
Nagasaki University



“Eel Science for Conservation and Sustainable Fishery”
Freshwater eels are important food fishes, but these populations have been declined. This lecture will introduce mysterious eel ecology and topics related to its conservation and sustainable use.

Host Professors of Laboratory Internship in AERRI 2025

Laboratory information is as of 1st April 2025. Please check the latest information at our web page using the QR code.



Environmental Policy		Science & Technology	
Prof. Aiko ENDO (Water-Energy-Food Nexus)	Assoc. Prof. Masahiko OTA (Natural Resource Management)	Prof. Hiroshi ASAKURA (Solid Waste and Resource Engineering)	Assoc. Prof. Tomoki NAKAYAMA (Atmospheric Environmental Science)
Assoc. Prof. Satoshi FUKAMI (Tourism and Environmental Education)	Prof. Yoko SEKI (Environmental Philosophy)	Assoc. Prof. Fumikazu IKEMORI (Atmospheric Organic Chemistry)	Prof. Masaya NISHIYAMA (Soil Science)
Prof. Seiko GOTO (Landscape Architecture)	Assoc. Prof. Sunhee SUK (Environmental Business and Management)	Assoc. Prof. Makoto KAGABU (Environmental Water Science)	Prof. Jiro OKADA (Neuroethology and Ecotoxicology)
Assoc. Prof. Hironori HAMASAKI (Environmental Governance)	Assoc. Prof. Takayuki TAKESHITA (Energy, Environmental, and Economic Systems Analysis)	Prof. Kazuaki KAWAMOTO (Satellite Climatology)	Prof. Seiji SHIRAKAWA (Green Chemistry)
Assoc. Prof. Mitsuru HATTORI (Evolutionary Ecology)	Assoc. Prof. Yuuki TOMOZAWA (History of Environmental Philosophy in Japan)	Assoc. Prof. Mitsuhiro KOYAMA (Resource Circulation Bioengineering)	Prof. Yuji TAKAO (Environmental Analytical Chemistry)
Assoc. Prof. Moe HONJO (Animal Law and Policy)	Assoc. Prof. Yoko WADACHI (Environmental Politics)	Assist. Prof. Takashi KUBO (Environmental Safety Science)	Assoc. Prof. Hiroyuki TAKASU (Biogeochemistry and Marine Environmental Science)
Prof. Kensuke KATAYAMA (Urban and Regional Planning)	Prof. Takashi WATANABE (Landscape and Regional Planning)	Assist. Prof. Kazuki MATSUSHIGE (Aquatic Conservation)	Prof. Kodo UMAKOSHI (Seismology and Volcanology)
Prof. Hidehiro KIKUCHI (Environmental Law and Policy)	Assoc. Prof. Mamoru YOSHIDA (Environmental Planning and Disaster Risk Management)	Prof. Masaki NAGAE (Environmental Toxicology)	Assoc. Prof. Masahiro YAMAGUCHI (Plant and Atmospheric Environment)
Assoc. Prof. Satoru KURODA (Environmental and Regional Sociology)		Prof. Kei NAKAGAWA (Environmental Groundwater Science)	Prof. Noriyuki YAMAGUCHI (Animal Ecology)
Assoc. Prof. Teng MA (Environmental Economics)		Prof. Hideki NAKAYAMA (Environmental Bioengineering)	

Nagasaki University
Area Map

About the
Nagasaki City

Population

The population of Nagasaki city is about 410,000.
長崎市の人口は約41万人です。

Environment

A centralized city that has a mix of the ocean, mountains, and a downtown area.
海・山・市街地が一つになったコンパクトな町です。

Cultural heritage

8 of the locations listed under UNESCO's "Sites of Japan's Meiji Industrial Revolution."
「明治日本の産業革命遺産」としてユネスコ世界遺産に登録された横浜遺産が長崎にはあります。

History

Nagasaki city has a culture of its own, one that is a mixture of Western, Chinese and traditional Japanese culture.
長崎は西欧、中国、そして日本の文化が融合している歴史豊かな町です。

Traffic

The tram that will make your transportation around the city much easier.
路面電車で長崎市内を簡単に回れます。

About Nagasaki 長崎について

Nagasaki is a very unique city where you can enjoy nature, historical sites and urban area at the same time. While you live in Nagasaki city, you can enjoy shopping, hiking, and going to beaches.
You don't want to miss the breathtaking night view of Nagasaki city that has been recognized as one of the "New Three Great Night Views of the World."

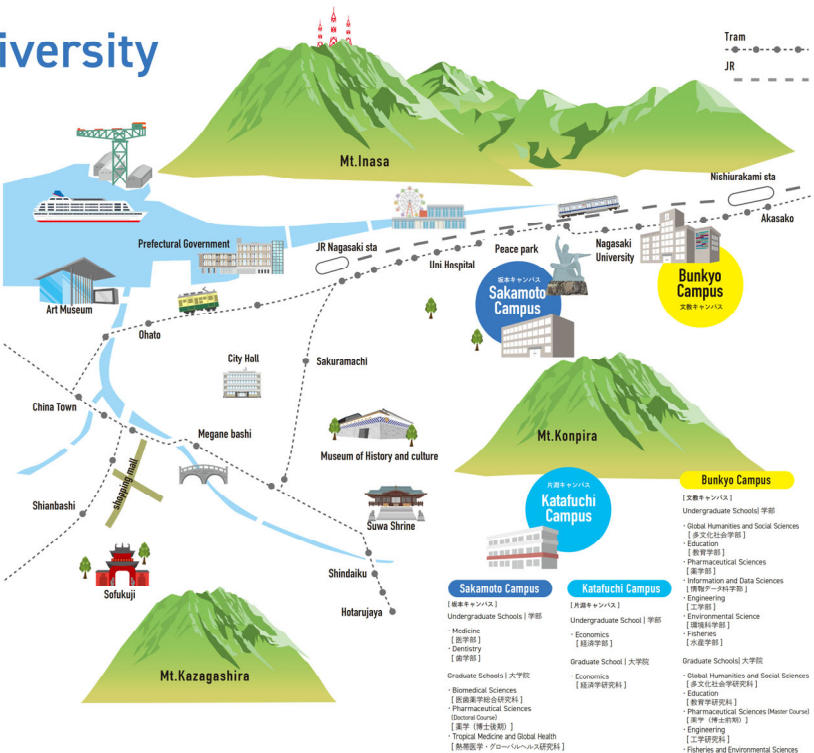
長崎は、自然と史跡、市街地を同時に楽しめるユニークな街です。市内に住みながら、ショッピングやハイキング、夏にはビーチを楽しめます。
また、長崎は「新世界三大夜景」に選ばれた街でもあります。長崎の夜景は見逃しません。

Climate 気候

Enjoy the beauty of all four seasons in Nagasaki!

長崎では、日本独特のはっきりとした四季を楽しめます。

Season 四季	Climate 気候	What you can enjoy 特色
Spring 春 March to May 3~5月	About 20°C. Moderate, Comfortable weather. 約20度、暑くもなく寒くもなくちょうど良い季節。	Flower viewing, Hanami! 花見を楽しめます。
Summer 夏 June to August 6~8月	About 32°C. Hot and humid. Rainy season in July. 約32度、暑くて湿度が高いです。7月は雨期に入ります。	Beautiful beaches. 美しいビーチが多くあります。
Fall 秋 September to November 9~11月	About 23°C. Moderate, Comfortable weather. 約23度、暑くもなく寒くもなくちょうど良い季節。	A huge festival called Kunchi which Nagasaki resident are passionate about. 長崎市民が毎年心待ちにしている、長崎で一番大きな祭り、くんちがあります。
Winter 冬 December to February 12~2月	About 8°C. Very dry. 約8度、空気がとても乾燥します。	Occasionally snow flurries without heavy snow. 大雪にはなりません、たまに降る雪の美しさを楽しめます。



Cost of Living 生活費

Lunch ランチメニュー(飲み物含む)	¥500-¥1,500
Combo meal in fast food restaurant ファストフード店でのセットメニュー	¥700
1 liter of whole fat milk 牛乳(1 L)	¥150-¥210
12 eggs (large) 卵1ダース	¥150-¥220
A bottle of mineral water (500 ml) at supermarket ミネラルウォーター(500ml)	¥70-¥150
A bottle of mineral water (2L) at supermarket ミネラルウォーター(2L)	¥120-¥200
A cup of coffee at a café カフェでのコーヒー	¥350-¥500
A movie ticket(student) 映画チケット(学生割引)	¥1,500

