

Environmental and Regional Sociology

Satoru KURODA

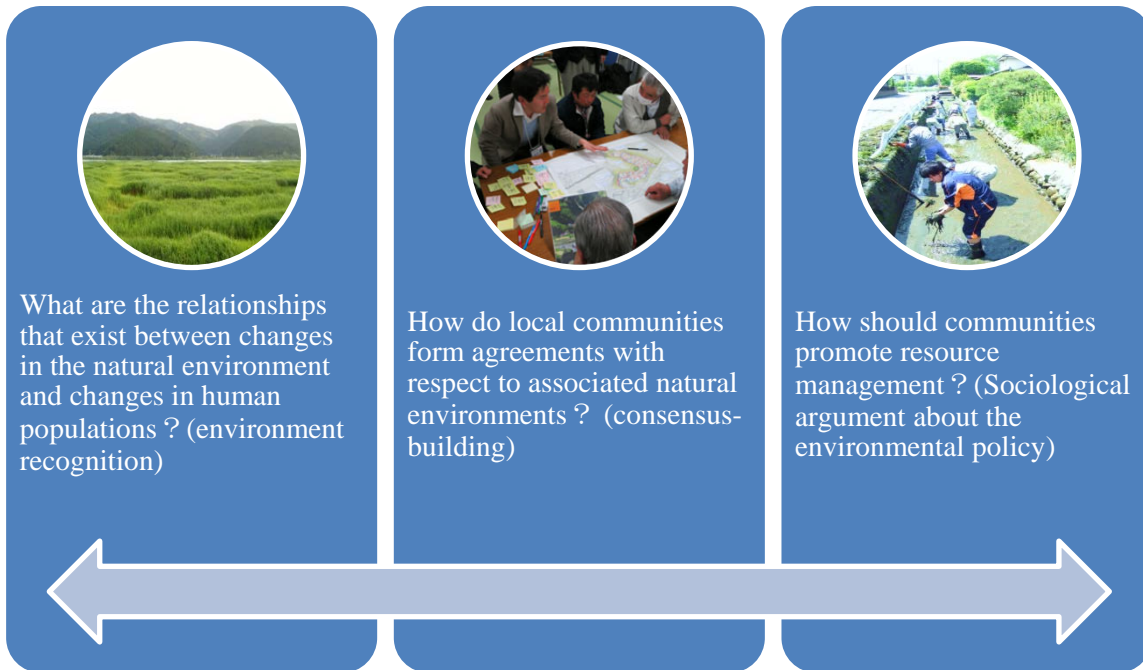
skuroda@nagasaki-u.ac.jp



❖ Fields of Study

Primary fields of study: Environmental Sociology, Regional Sociology

Primary Methodology: Fieldwork (Research questions)



❖ Research initiatives

- (1) We have carried out fieldwork in the Yoshi (reed) field located at the Kitakami river estuary, region in Miyagi prefecture, Japan. Our goal is to determine what level of sustainability current management practices in the region can achieve through understanding changes in both natural and societal systems.
- (2) We work in conjunction with local volunteer groups to monitor the conditions in forests and small rivers in the suburbs of Sapporo-shi, Hokkaido, Japan.
- (3) We conduct fieldwork related to the maintenance and the maintenance and use of an urban agriculture project in Hino-shi, Tokyo, Japan.
- (4) March, 11, 2011 East-Japan Earthquake: The East-Japan Earthquake resulted in, a large-scale tsunami being generated off the coasts of Iwate, Miyagi, and Fukushima prefectures. Our research is involved in both research and practical efforts related to the implementation of community reconstruction efforts on the Kitakami river estuary Miyagi prefecture, Japan.

